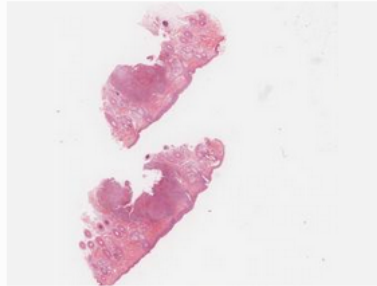
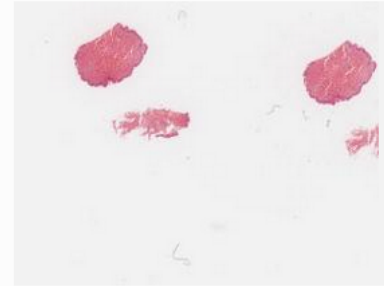




Case 31

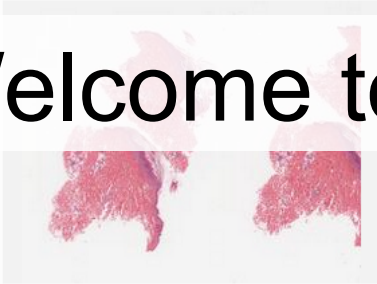


Case 32

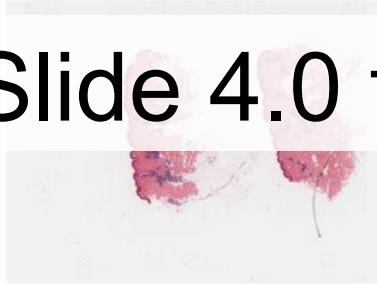


Case 33

# Welcome to iSlide 4.0 tutorial video



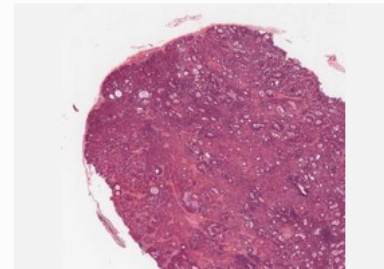
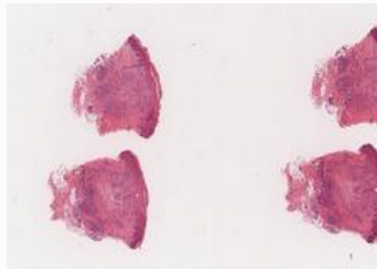
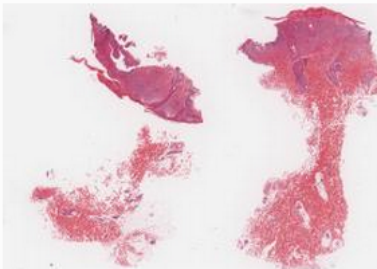
Case 34

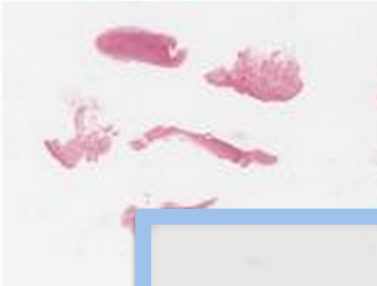


Case 35

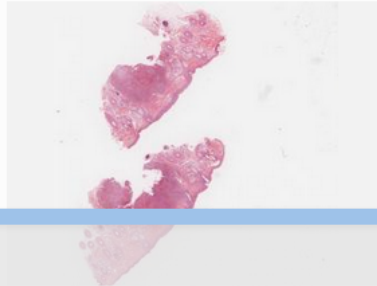


Case 36





Case 31



Case 32



Case 33

# Sign Up



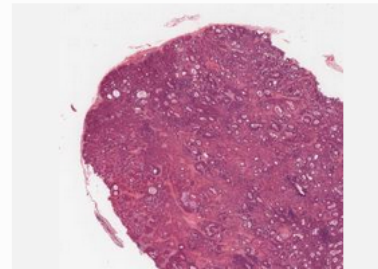
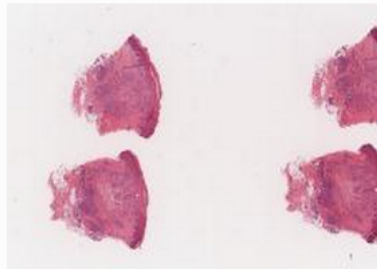
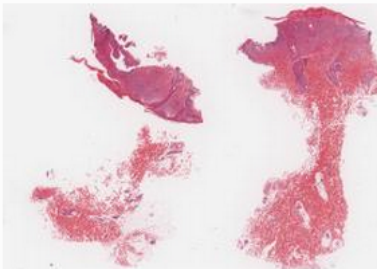
Case 34



Case 35

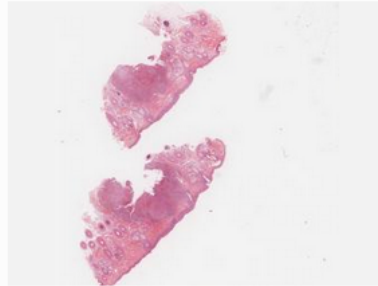


Case 36

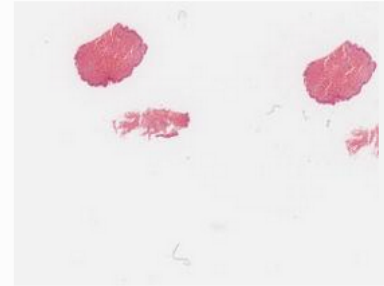




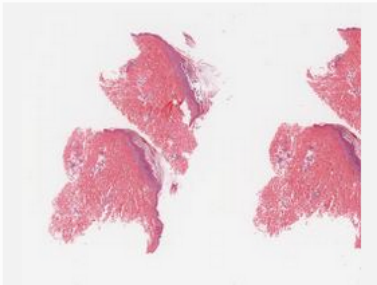
Case 31



Case 32



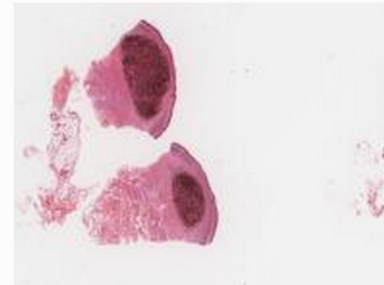
Case 33



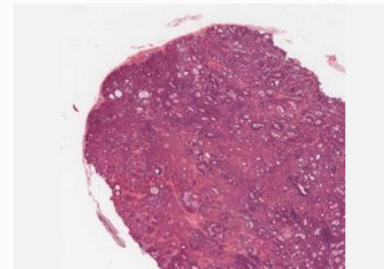
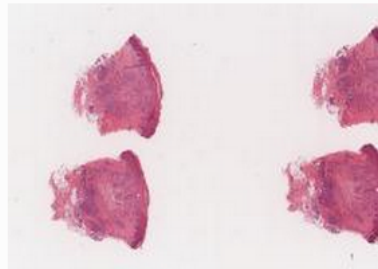
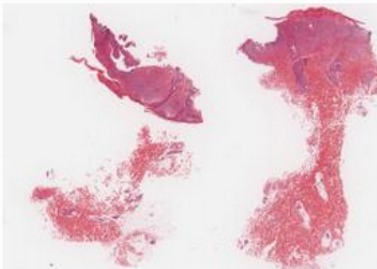
Case 34



Case 35



Case 36



## START EXPLORING GREAT ISLIDE TODAY!

1

 Sign up with Facebook

OR

Email Address

First Name

Last Name

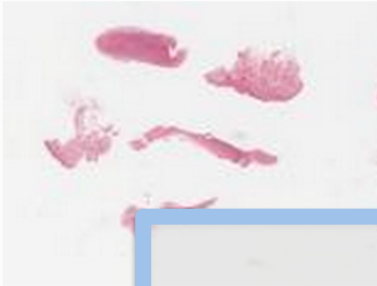
password

Confirm password

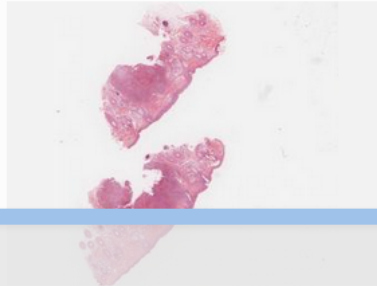
2

Create your iSlide Account





Case 31



Case 32



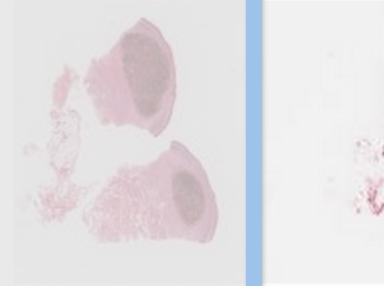
Case 33



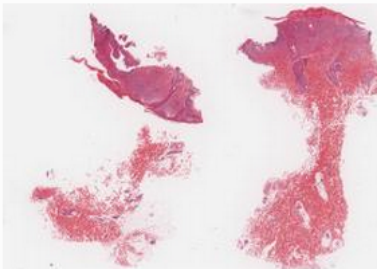
Case 34



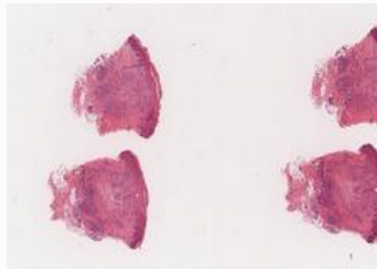
Case 35



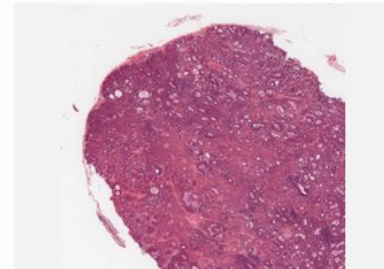
Case 36



Case 37



Case 38

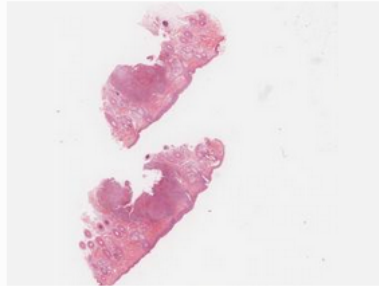


Case 39

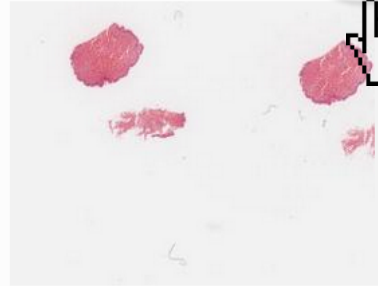
Login



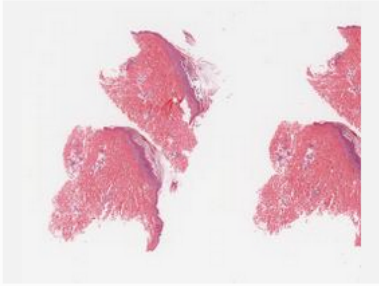
Case 31



Case 32



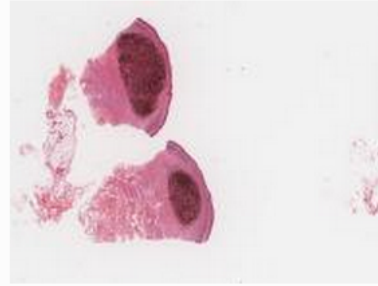
Case 33



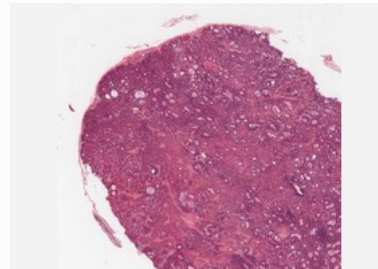
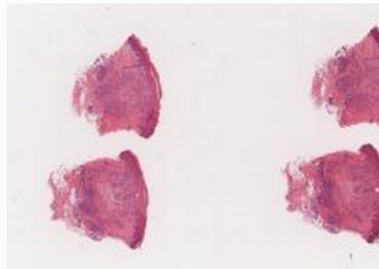
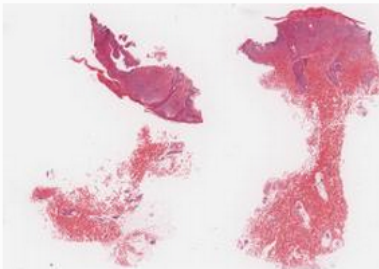
Case 34



Case 35



Case 36



## LOGIN TO YOUR ISLIDE ACCOUNT



1

 Sign in with Facebook

OR

Email Address

password

2

Login

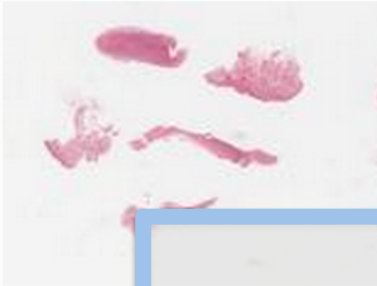
Case 31

Case 33

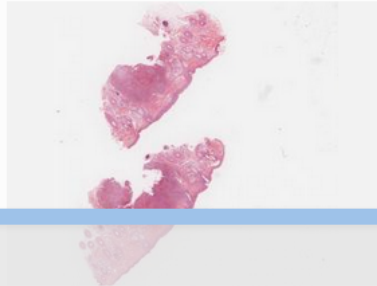
Case 34

Case 35

Case 36



Case 31



Case 32



Case 33



Case 34

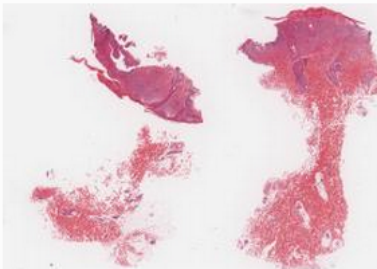


Case 35

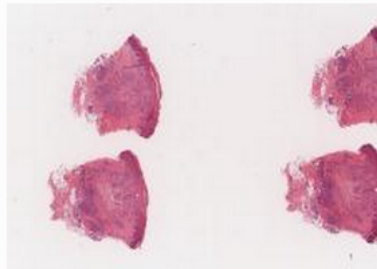


Case 36

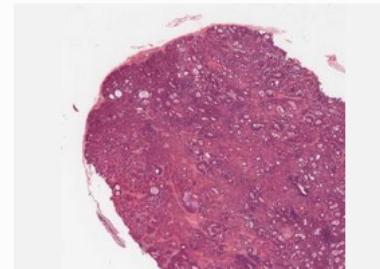
View



Case 37



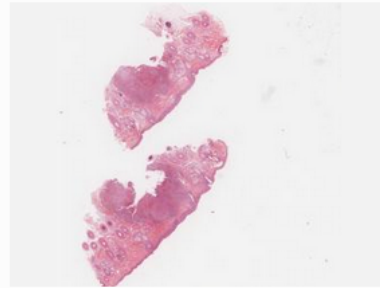
Case 38



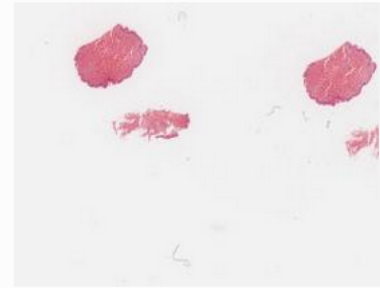
Case 39



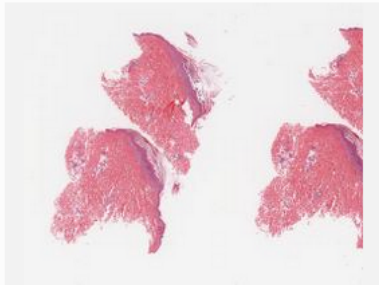
Case 31



Case 32



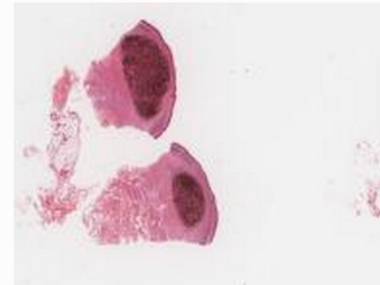
Case 33



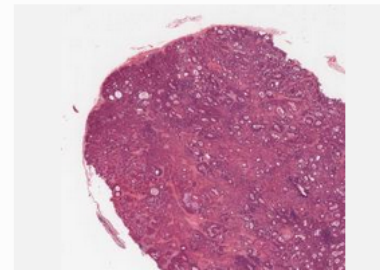
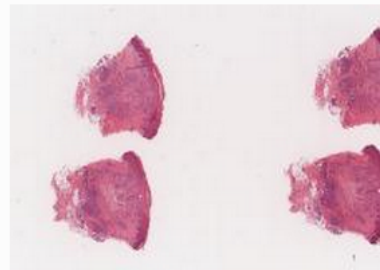
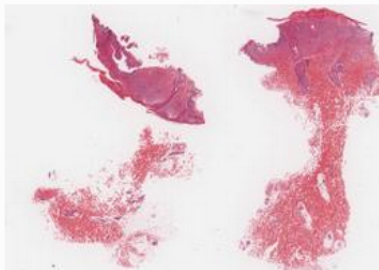
Case 34



Case 35



Case 36



Case 31

Case 32

Case 33

Case 34

Case 35

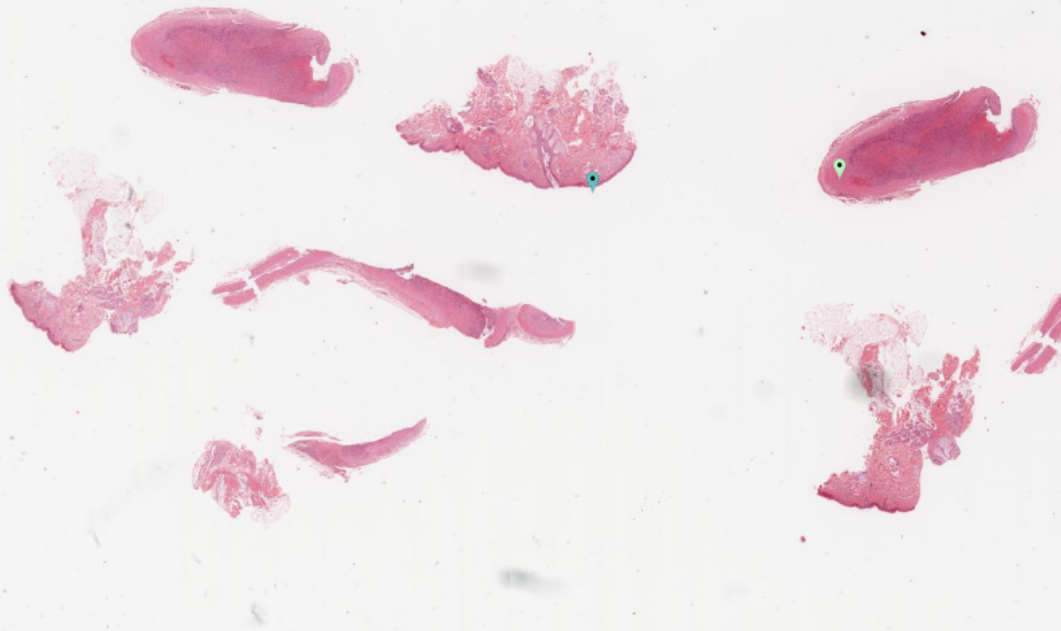
Case 36

Case 37

Case 38

Case 39

ALL SLIDES



Mark List

Mark Information

Enter your comment here...

This is for test2

Show All Mark

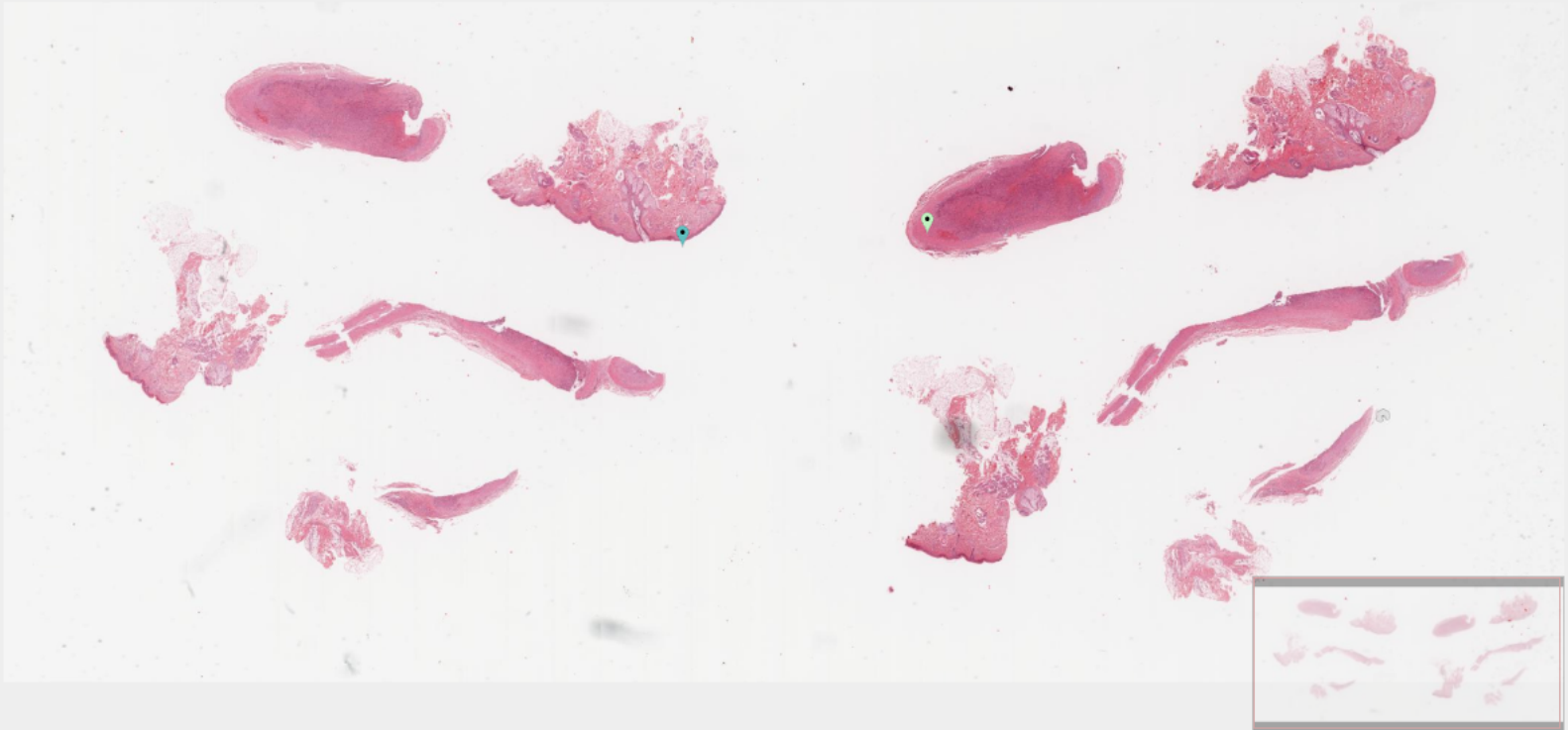
Hide All Mark

Clinical Information

Marks List

You can expand/collapse both left side and right side panels.





You can expand/collapse both left side and right side panels.



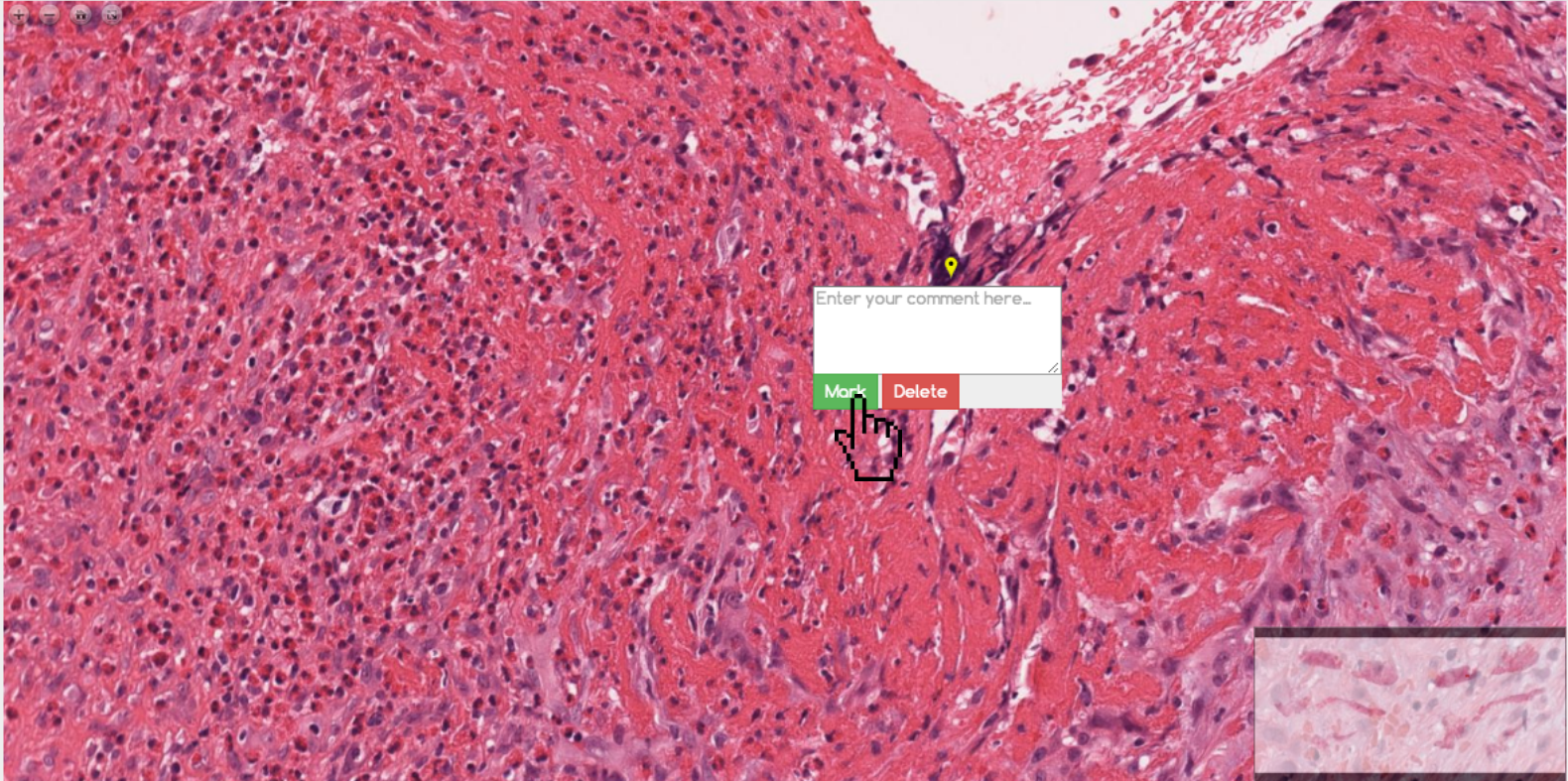




You can zoom in/out by mouse wheel.



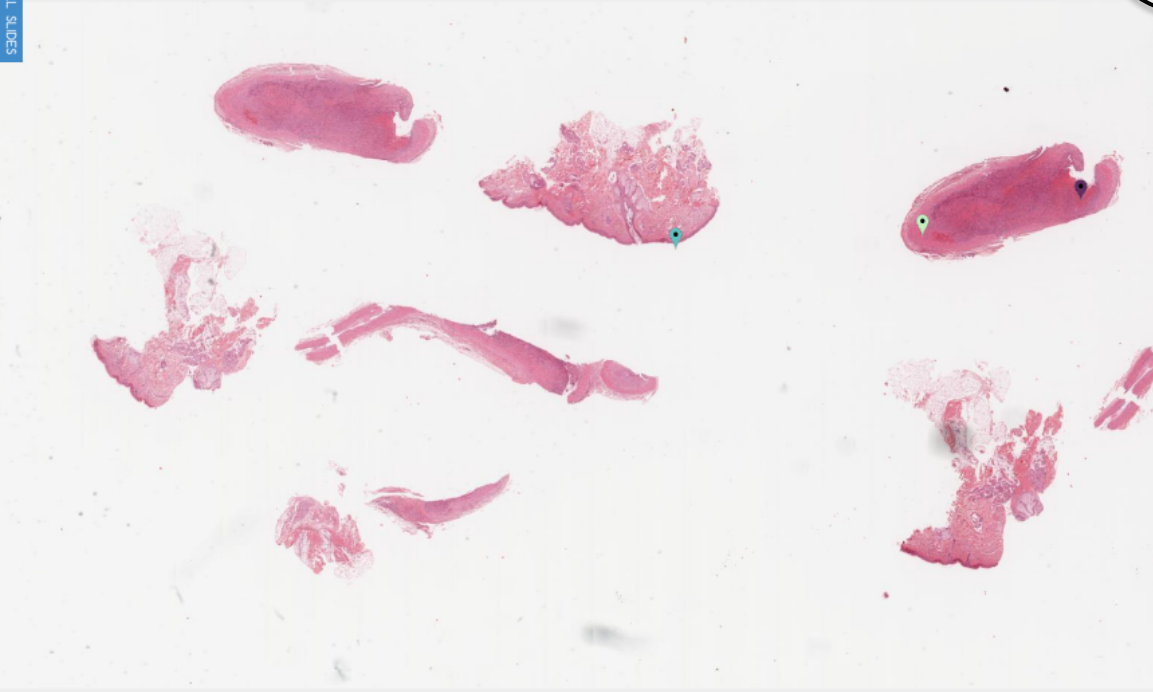




You can annotate with your comment by double-clicking the mouse.

- Case 31
- Case 32
- Case 33
- Case 34
- Case 35
- Case 36
- Case 37
- Case 38
- Case 39

ALL SLIDES



Mark List

Enter your comment here...

- This is for test2
- What's this dark area?

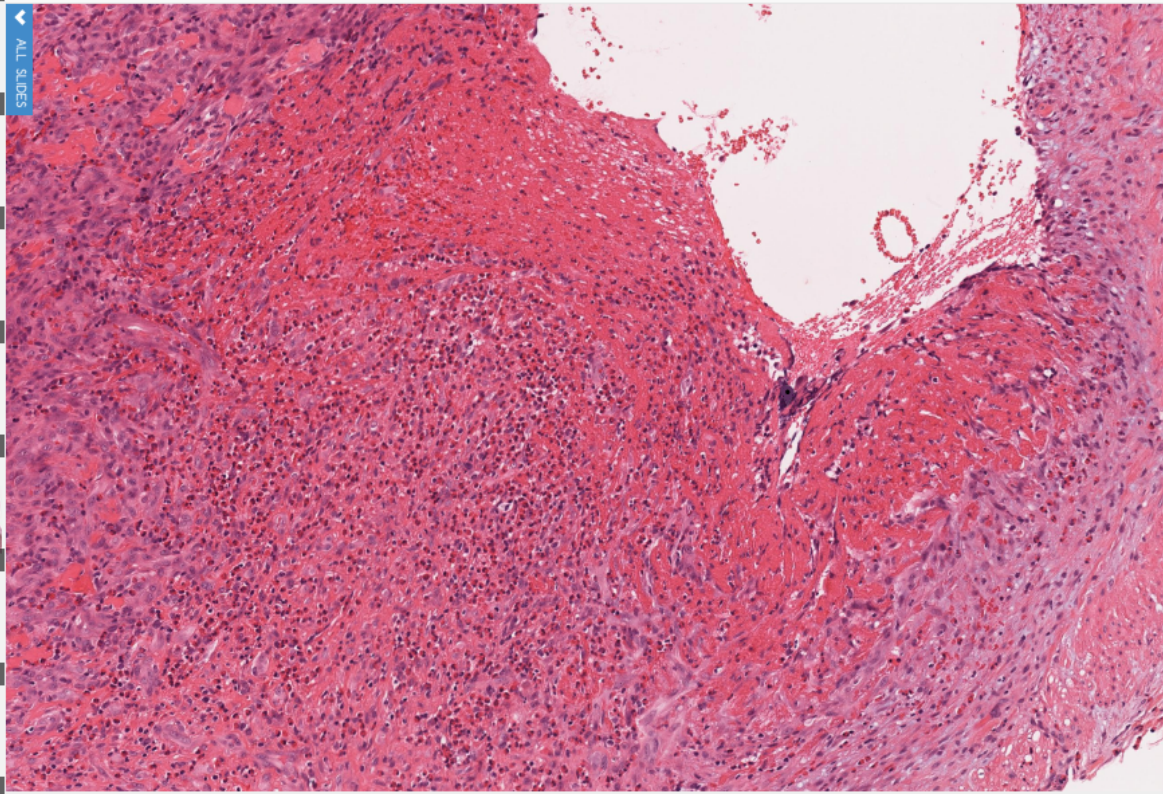
Show All Mark

Hide All Mark

Your annotation will be listed at 'Mark List.'



- Case 31
- Case 32
- Case 33
- Case 34
- Case 35
- Case 36
- Case 37
- Case 38
- Case 39



[Mark List](#)

What's this dark area?  
Chih-Wei Grace Huang, 2014-11-29 19:14:51

[Edit](#) [Delete](#) [Like](#) [0](#)

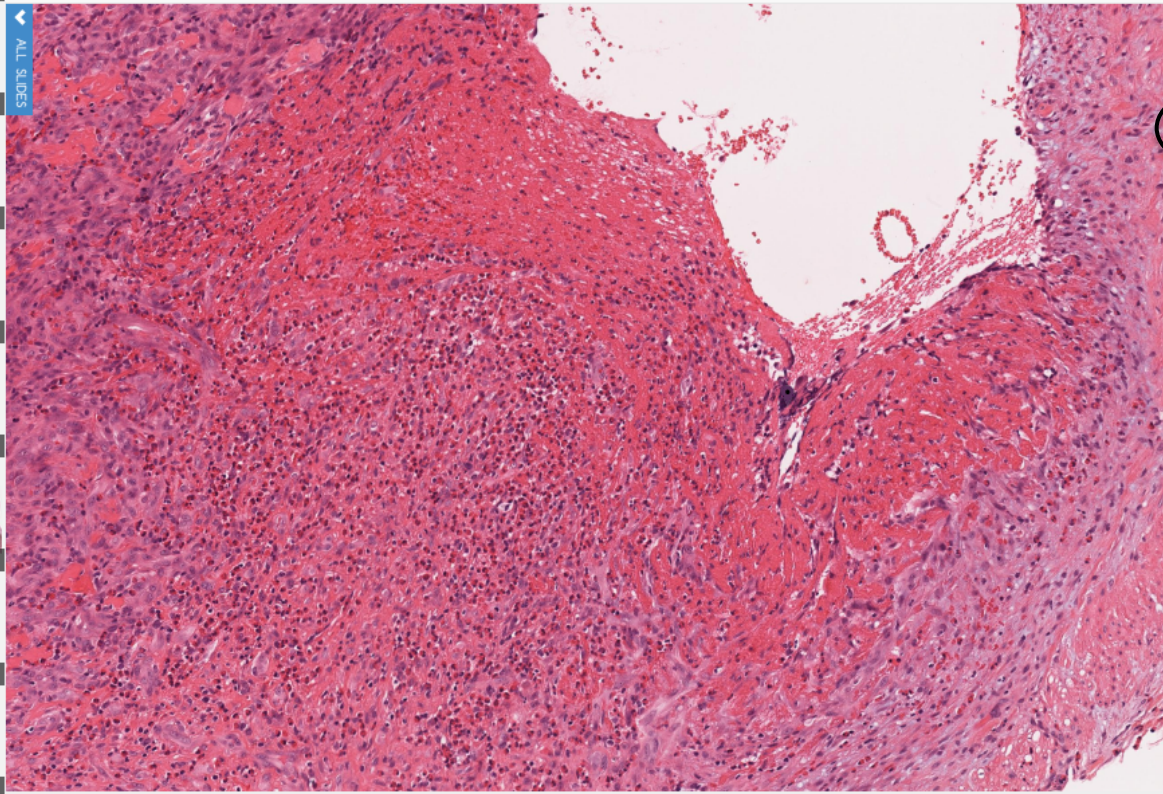
add new comment here...

[POST](#)

[Mark Information](#)

Your comment show in the 'Mark Information.'

- Case 31
- Case 32
- Case 33
- Case 34
- Case 35
- Case 36
- Case 37
- Case 38
- Case 39



Mark List      Mark Information

What's this dark area?

Chih-Wei Grace Huang, 2014-11-29 19:14:51

Edit   Delete   Like  

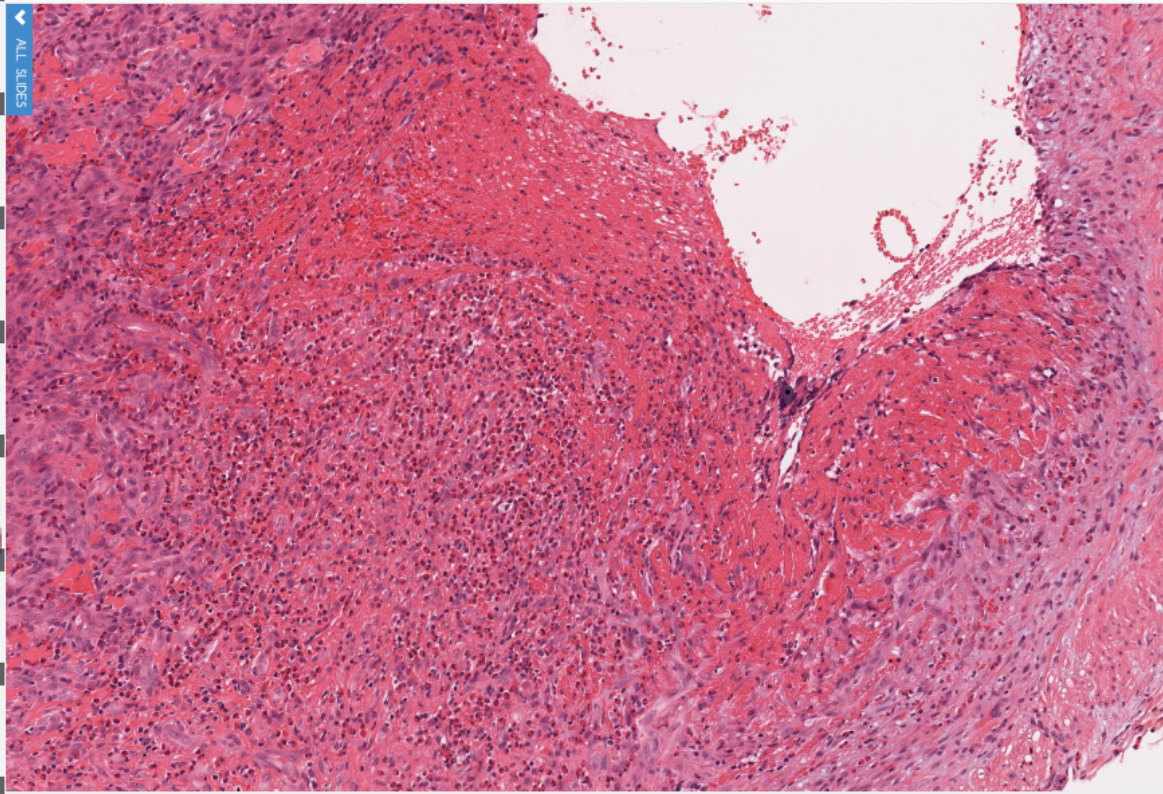
add new comment here...

POST

You can edit/delete your comment.



- Case 31
- Case 32
- Case 33
- Case 34
- Case 35
- Case 36
- Case 37
- Case 38
- Case 39



Mark List      Mark Information

What's this dark area?  
Chih-Wei Grace Huang, 2014-11-29 19:14:51

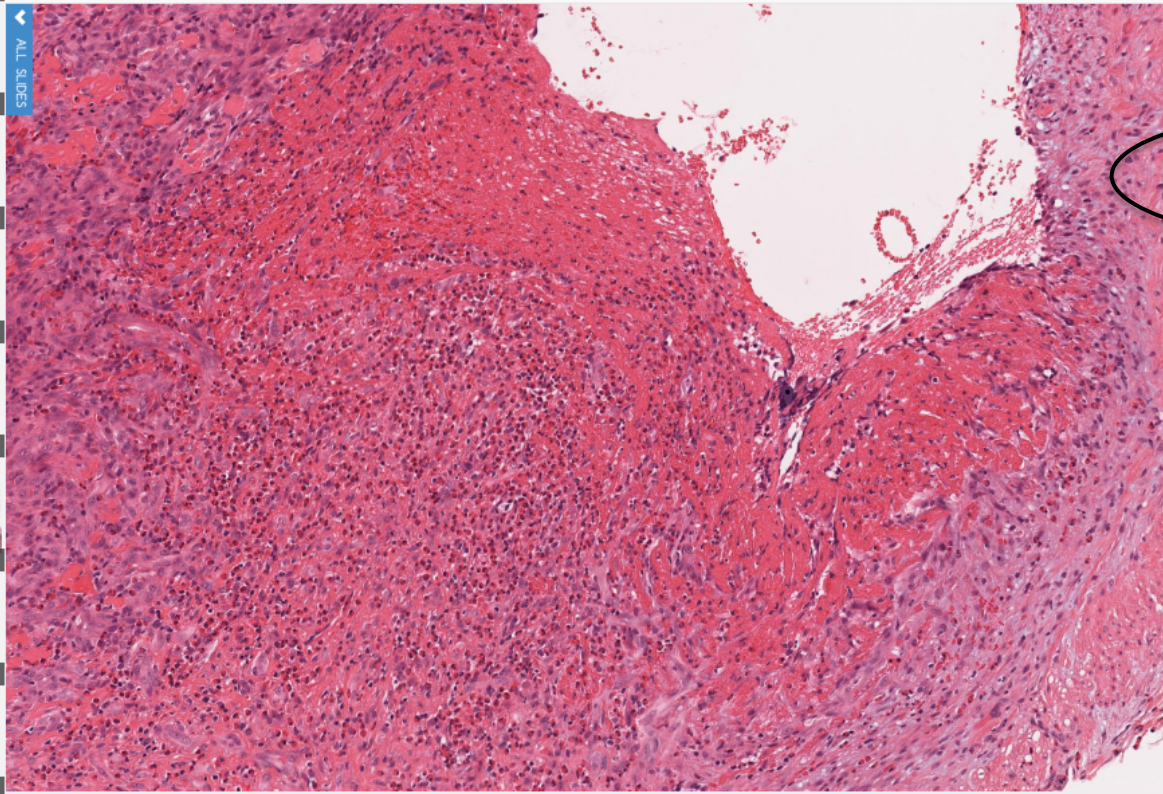
Edit   Delete   **Like**   100

add new comment here

POST

You can also 'Like' your or others comments.

- Case 31
- Case 32
- Case 33
- Case 34
- Case 35
- Case 36
- Case 37
- Case 38
- Case 39



Mark List    Mark Information

What's this dark area?  
Chih-Wei Grace Huang, 2014-11-29 19:14:51

Edit   Delete   Like  

add new comment here...   **POST**

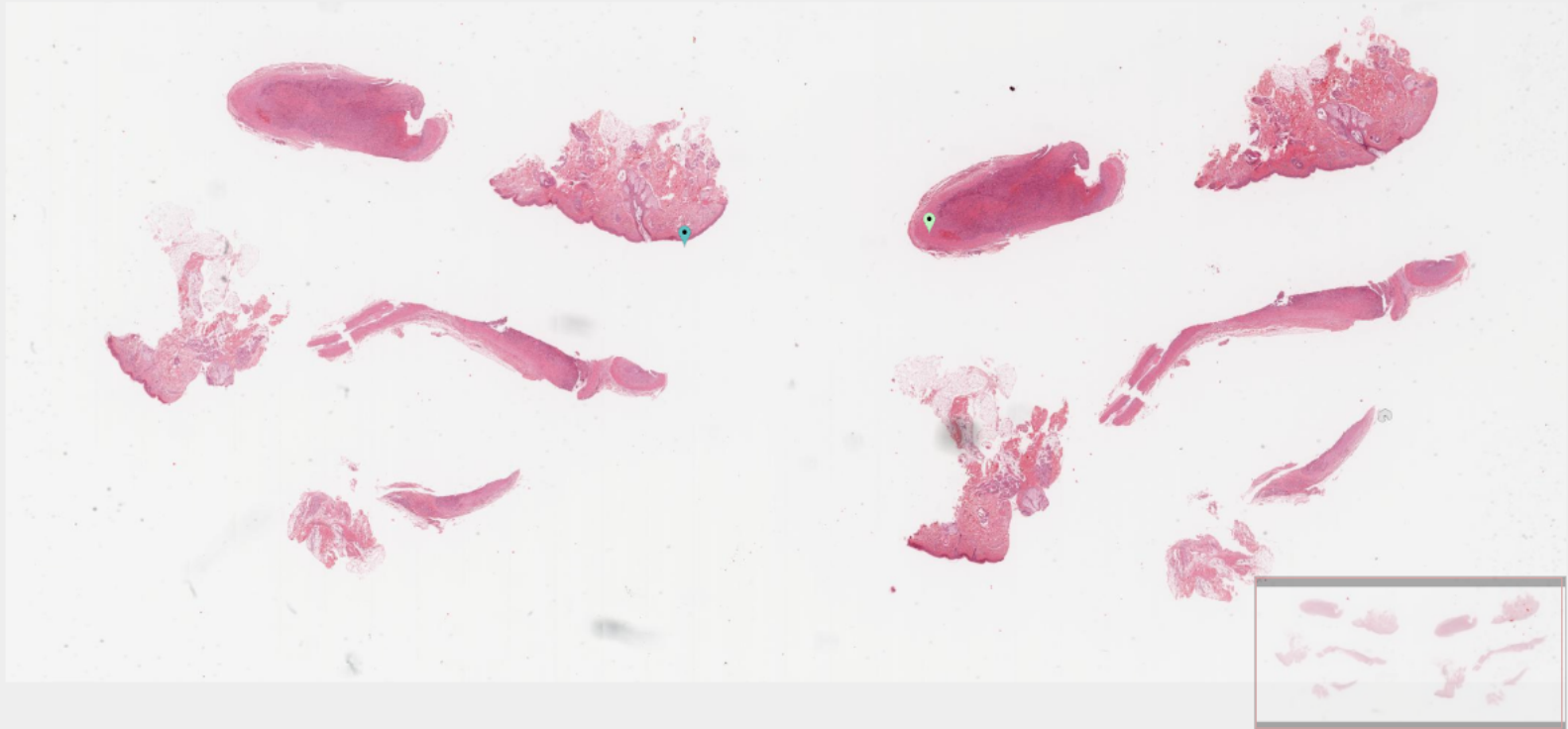


And, reply your/others comment below.





Information

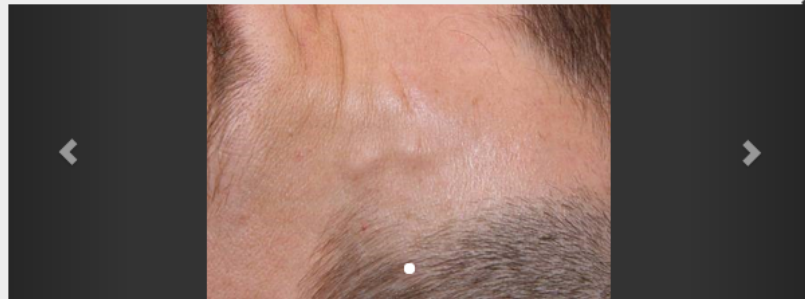


Check the 'Clinical information,' you can get detailed description of the case.



## Case 31

A 45-year-old man had two asymptomatic skin-colored subcutaneous nodules on his left forehead. One of them was excised. The clinical impression is epidermal cyst.



What's the best diagnosis?

- a. Intravascular pyogenic granuloma
- b. Intravascular fasciitis
- c. Intravascular angiolymphoid hyperplasia with eosinophilia
- d. Intravascular papillary endothelial hyperplasia
- e. Reactive angioendotheliomatosis

Answer

And, answer the multiple choice question.

### Case 31

A 45-year-old man had two asymptomatic skin-colored subcutaneous nodules on his left forehead. One of them was excised. The clinical impression is epidermal cyst.



What's the best diagnosis?

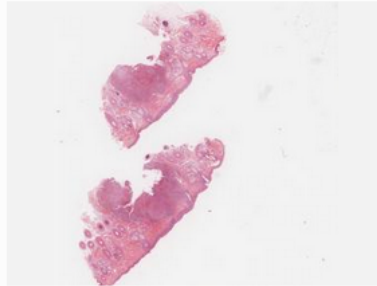
<input checked="" type="checkbox"/> a. Intravascular pyogenic granuloma	40.5 %
<input type="checkbox"/> b. Intravascular fasciitis	21.6 %
<input type="checkbox"/> c. Intravascular angiolymphoid hyperplasia with eosinophilia	21.6 %
<input type="checkbox"/> d. Intravascular papillary endothelial hyperplasia	5.4 %
<input type="checkbox"/> e. Reactive angioendotheliomatosis	10.8 %

Saved

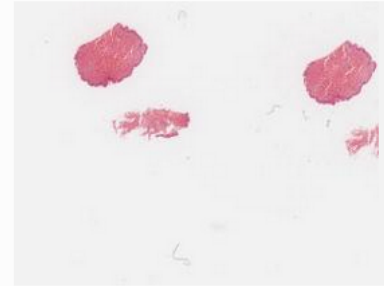
You can know how much percentage of people have the same choice with you after answering the question.



Case 31



Case 32



Case 33

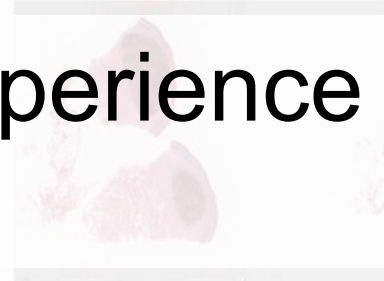
Wish you have a nice experience  
with iSlide4.0!



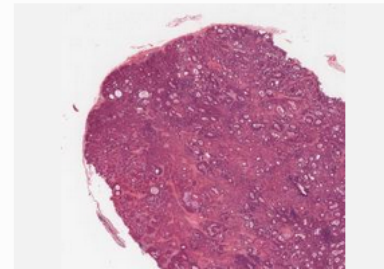
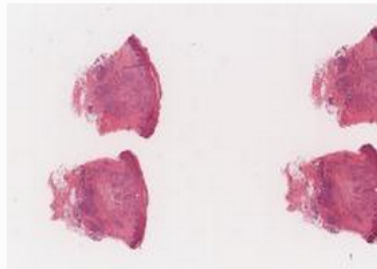
Case 34



Case 35

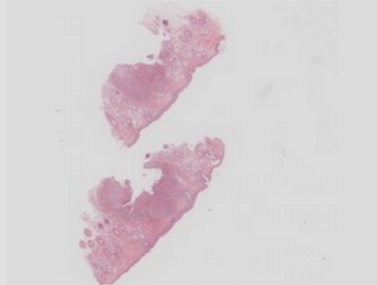


Case 36

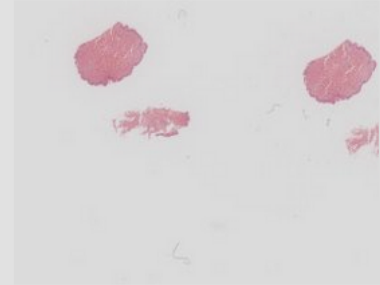




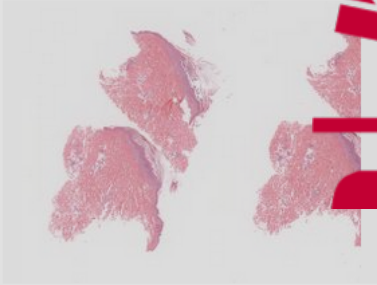
Case 31



Case 32



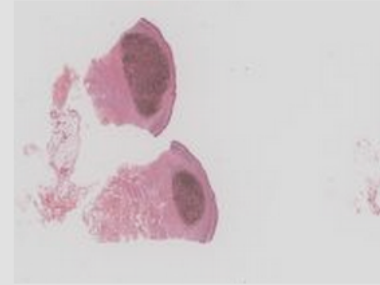
Case 33



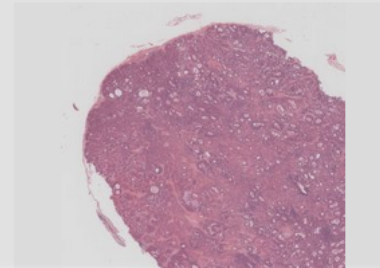
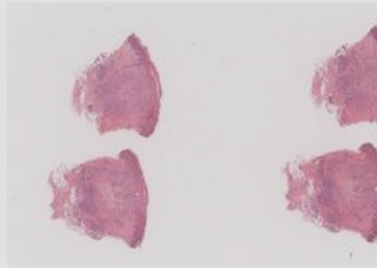
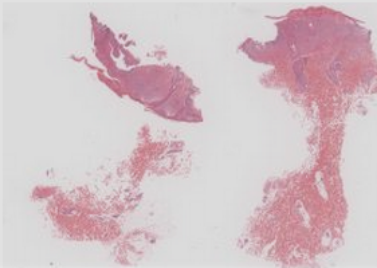
Case 34



Case 35



Case 36



iSlide<sup>4.0</sup>  
TMU x MMH